



*Air for life*

## Installation regulations

Signal Amplifier

English





# Installation regulations

Signal Amplifier



Store near the appliance

This appliance may be used by children as of 8 years of age, persons with reduced physical or mental capacities, and persons with limited knowledge and experience if they are supervised or have received instructions on how to use the appliance safely and are aware of the possible dangers.

Children younger than 3 years of age must be kept away from the appliance, unless they are under constant supervision.

Children between the ages of 3 and 8 may switch the appliance on or off, but only if supervised or if they have received clear instructions on the safe use of the appliance and understand the possible dangers, on the condition that the appliance has been placed and installed in the normal position for use. Children between the ages of 3 and 8 may not insert the plug into the socket, nor clean or make changes to the settings of the appliance, nor carry out any maintenance on the appliance that would normally be carried out by the user. Children may not play with the appliance.

**If you need a new power cable, always order the replacement from Brink Climate Systems B.V. To prevent dangerous situations, a damaged mains connection must only be replaced by a qualified expert!**

Country: GB

# Contents

1	User manual. . . . .	5
1.1	Description wireless signal amplifier. . . . .	6
1.2	Delivery content. . . . .	7
2	Technical specification. . . . .	8
2.1	General product specification. . . . .	8
2.2	Environmental influences. . . . .	8
3	Assembly. . . . .	9
3.1	Installing Signal Amplifier. . . . .	9
4	Setting to work. . . . .	10
5	Troubleshooting and warranty. . . . .	11
5.1	Failure. . . . .	11
5.2	Warranty. . . . .	11
6	Maintenance. . . . .	12
6.1	Maintenance. . . . .	12
7	Declaration of Conformity. . . . .	13
8	Recycling and disposal. . . . .	14

# 1 User manual

Dear client,

Thank you for purchasing the Signal Amplifier. This user and installation manual contains all required information to quickly become familiar with the product. We kindly request you to carefully go through this information before using the product. This user's manual is intended for the Signal Amplifier installer and end user.

Store this user's manual. For more information or ordering manuals, please contact:

Brink Climate Systems B.V.  
Postbus 11  
NL-7950 AA, Staphorst, The Netherlands  
T: +31 (0) 522 46 99 44  
F: +31 (0) 522 46 94 00  
E: [info@brinkclimatesystems.nl](mailto:info@brinkclimatesystems.nl)  
[www.brinkclimatesystems.nl](http://www.brinkclimatesystems.nl)

# 1.1 Description wireless signal amplifier

## Intended and Unintended Use

This manual is about the Signal Amplifier (See H) in the image below.

The Signal Amplifier is designed to extend the signal range between the wireless transmitter/receiver (F) and remote controllers/sensors (A-E).

The installation of the Signal Amplifier is necessary when the signal needs to travel a long distance in the house, in highly insulated homes, or in situations where signal-interfering materials are used.

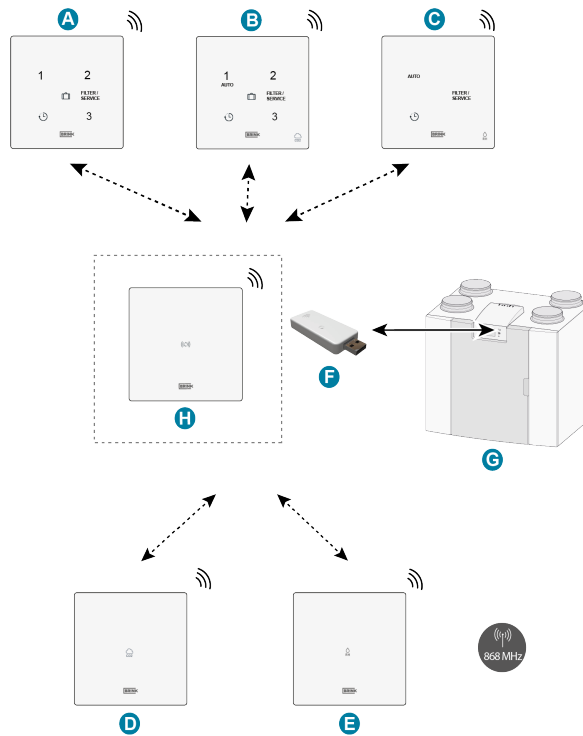
The Signal Amplifier should be placed between the wireless transmitter/receiver and the remote controller(s)/sensor(s) in such a way that communication between the wireless transmitter/receiver and the remote controller(s)/sensor(s) is possible. This may be different per installation/home.

Do not place the signal amplifier directly next to other wireless components but ideally halfway between the wireless transmitter/receiver and the remote controller(s)/sensor(s).



### Note

The Signal Amplifier needs 230 VAC power supply



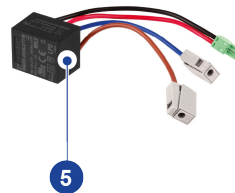
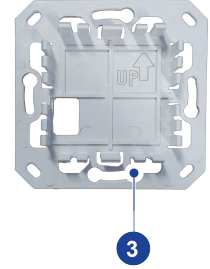
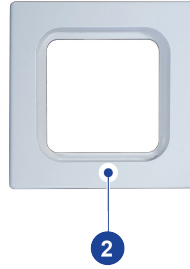
- A. Wireless 3-position switch
- B. Wireless CO<sub>2</sub> sensor with 3-position switch
- C. Wireless RH sensor with boost function
- D. Wireless CO<sub>2</sub> sensor
- E. Wireless RH sensor
- F. Wireless transmitter/receiver
- G. Device with USB connection (e.g., HRU device type Flair)
- H. (Optional) Signal amplifier

## 1.2 Delivery content

Check that the delivered Signal Amplifier is complete and not damaged.

*The delivery content of the Signal Amplifier consists of the following components:*

1. Signal Amplifier
2. Frame
3. Wall bracket
4. Mounting screws (2x) & wall plugs (2x)
5. Permanent power supply (230 VAC /5 VDC)
6. Short information with QR-code to on line manual



# 2 Technical specification

## 2.1 General product specification

### Product description

Name: Signal Amplifier

### Technical product specifications

Operating voltage: 5 V

Protection class: IP21

Frequency: 868 MHz

Color: RAL 9010 (White)

### Ambient conditions

Ambient temperature: 0 °C to 50 °C

Storage temperature: -20 °C to 60 °C

Humidity: 0% to 90%

Other: For indoor use

Range: 300 m (open field; 1 meter height)

## 2.2 Environmental influences

For correct functioning, the Signal Amplifier should be placed and used in a space with the correct ambient conditions for proper operation. The Signal Amplifier may only be mounted indoors, but not close to a heat source, a radiator or in an extreme humid environment. The Signal Amplifier may not be exposed to direct radiation heat (sun light). The Signal Amplifier may not be installed close to a magnetic field. This could damage internal components.



# 3 Assembly

## 3.1 Installing Signal Amplifier

Perform **step 1** to **step 4** to install the Signal Amplifier.

An example of a wireless controller is shown. The Signal Amplifier is installed in the same way.

The Signal Amplifier needs to be installed on a flush mounted electrical wall box (Ø 55 mm).



### Note

The signal amplifier must be positioned between the wireless transmitter/receiver and the remote controller/sensor that is mounted out of range. Test the desired mounting location of the signal amplifier to ensure proper functionality.

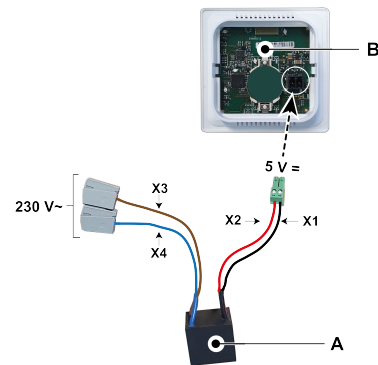


### Note

At all times disconnect the 230 V mains supply when connecting the permanent power supply!

### Step 1

- Place the permanent power supply (A) in the wall box.
- The 230V mains supply must be connected to the factory mounted gray connectors. Strip the wire over a length of approx. 7 mm.



### Step 2

- Feed the red and black wires with the green connector through the square hole in the in the wall bracket(C).
- Screw the wall bracket on the wall box.



### Note

**The arrow on the wall bracket must point upwards!**

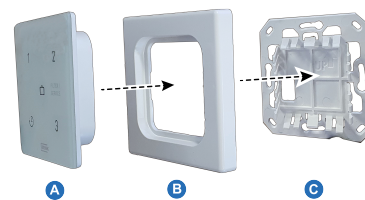
A. Permanent power supply (230V~/5V=)

B. Signal Amplifier

X1 = Black  
X2 = Red  
X3 = Brown  
X4 = Blue

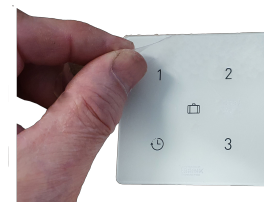
### Step 3

- Feed the red and black wire with the green connector through the frame (B) and connect this to the connector on the back side of the Signal Amplifier (A).
- Click the Signal Amplifier (A) together with connected red and black wires and the frame (B) on the wall bracket (C).



### Step 4

- After mounting the Signal Amplifier on the wall bracket, remove the foil from the front.
- Reconnect the 230 V. power supply.



# 4 Setting to work

Once the Signal Amplifier is powered up, it will start to operate automatically. The Signal Amplifier does not need programming.

# 5 Troubleshooting and warranty

## 5.1 Failure

To test if the signal amplifier is working properly:

- Press and hold the button (in the small hole at the bottom of the signal amplifier) for 5 seconds . When pressing the button a "click" should be noticeable.
- The LED on the signal amplifier will illuminate when the signal amplifier receives a message. This may take up to 30 seconds for a CO<sub>2</sub> sensor and up to 10 minutes for an RH sensor or 3-position switch. Operating a remote controller or sensor actively should illuminate the LED on the signal amplifier.
- Press the button (in the small hole at the bottom of the signal amplifier) again for 5 seconds to exit the "test" mode of the signal amplifier. Switching the 230V power off and on will also end the mode.

If the signal amplifier does not work, the wireless transmitter/receiver and/or the remote controller(s)/sensor(s) are not within range of the signal amplifier.

Refer to the respective manual of the wireless transmitter/receiver or remote controller/sensor for other malfunctions in the wireless system.

## 5.2 Warranty

"The Signal Amplifier has been carefully manufactured by Brink Climate Systems B.V. and meets high-quality standards. The functionality of the Signal Amplifier is guaranteed for a period of two years from the moment of delivery. This warranty is provided in accordance with Brink Climate Systems B.V.'s General Terms and Conditions, which you can find on [www.brinkclimatesystems.nl](http://www.brinkclimatesystems.nl). In case of incorrect or improper use of the Signal Amplifier and failure to follow the instructions in this user manual, your right to warranty is void.

If you wish to claim warranty:

You must make this known in writing via:

Brink Climate Systems B.V.

Postbus 11

NL-7950 AA, Staphorst, The Netherlands



### Note

It is not allowed to make any changes to the hardware or software of the Signal Amplifier. This can affect the proper functioning of the Signal Amplifier, and in that case, all warranties will be void."

---

# 6 Maintenance

## 6.1 Maintenance

Clean the Signal Amplifier regularly with a soft cloth.



**Note**

Never apply water and/or (cleaning) liquid to the Signal Amplifier.

---



# 8 Recycling and disposal



Do not dispose of as household waste!

In accordance with the Waste Disposal Act, the following components must be disposed of or recycled in an environmentally compatible manner by means of appropriate collection points:

- Old appliance
- Wearing parts
- Defective components
- Electrical or electronic waste
- Environmentally hazardous liquids and oils

Environmentally compatible means separated by material groups to ensure the greatest possible recyclability of the basic materials with the minimum environmental impact.

1. Dispose of packaging made of cardboard, recyclable plastics and synthetic filler materials in an environmentally compatible manner through appropriate recycling systems or a recycling centre.
2. Please observe the applicable national and local regulations.





*Air for life*

**Brink Climate Systems B.V.**

Wethouder Wassebaliestraat 8, NL-7951SN Staphorst

T: +31 (0) 522 46 99 44

E. [info@brinkclimatesystems.nl](mailto:info@brinkclimatesystems.nl)

[www.brinkclimatesystems.nl](http://www.brinkclimatesystems.nl)